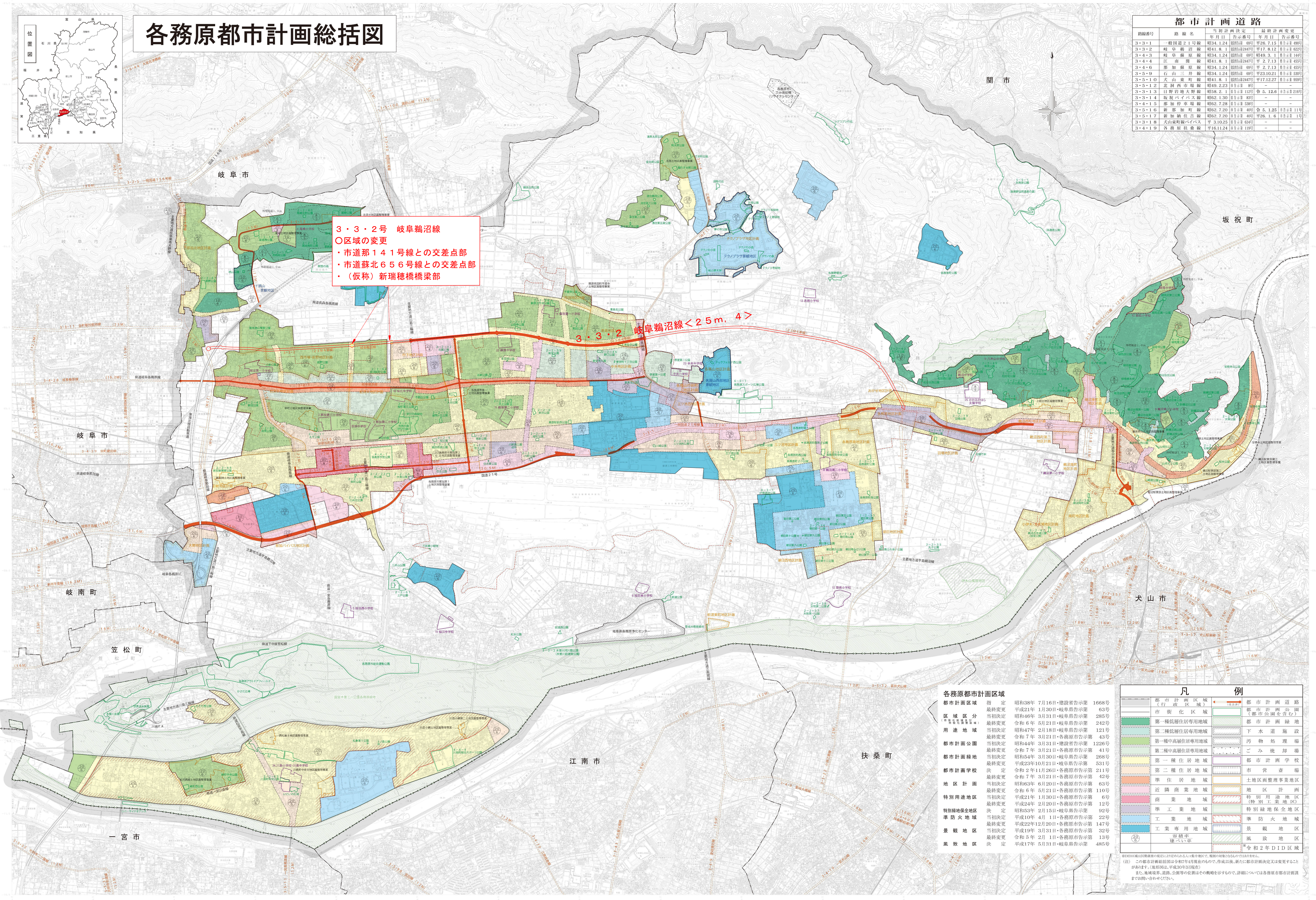
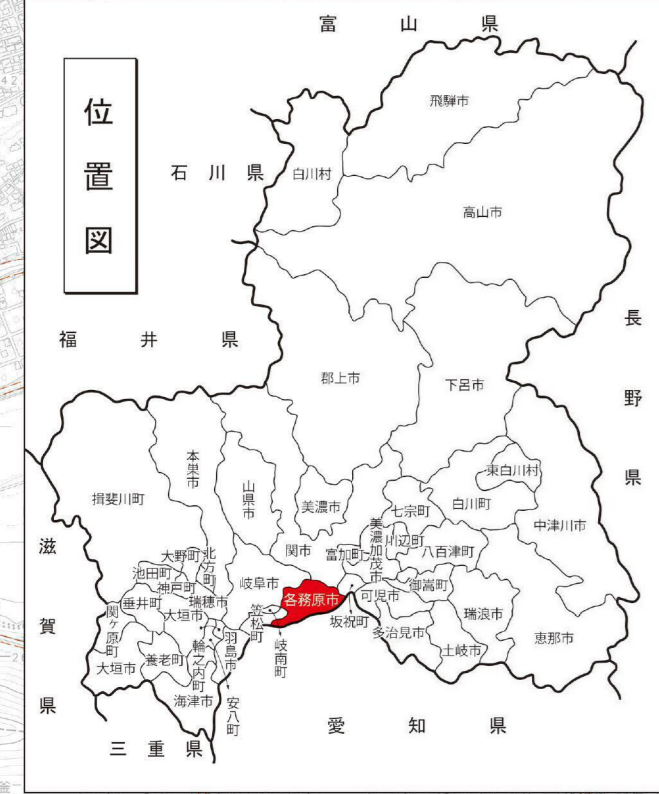


各務原都市計画総括図



3・3・2号 岐阜鵜沼線
○区域の変更
・市道那141号線との交差点部
・市道蘇北656号線との交差点部
・(仮称)新瑞穂橋梁部

Table titled '都市計画道路' (Urban Planning Roads) listing road names, decision dates, and other details.

Table titled '各務原都市計画区域' (Gakutani Urban Planning Area) listing various zones and their corresponding dates.

Table titled '凡例' (Legend) defining symbols and colors used on the map for various planning zones and roads.