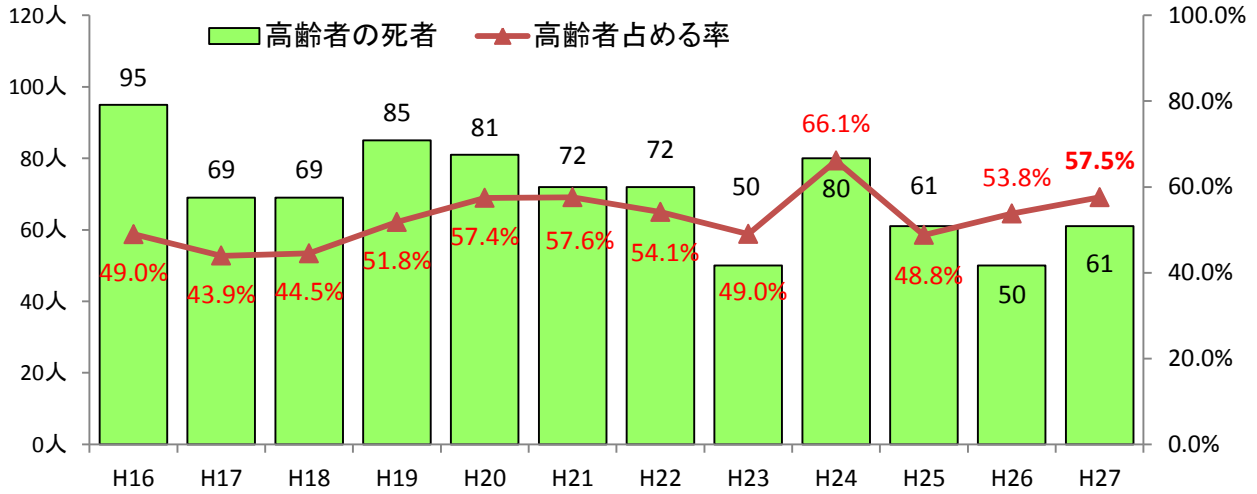
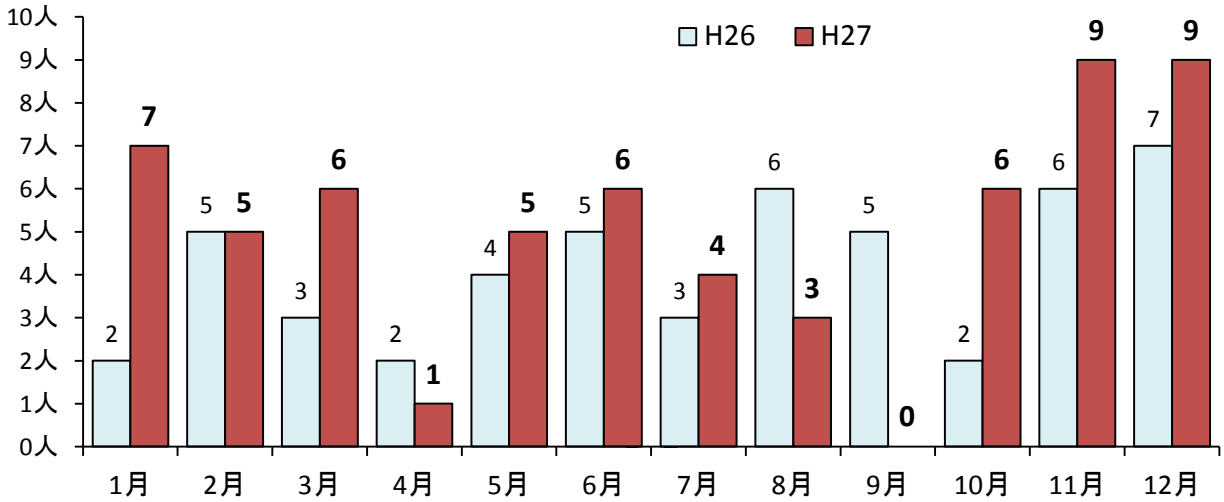


平成27年中の高齢者が関係する交通死亡事故

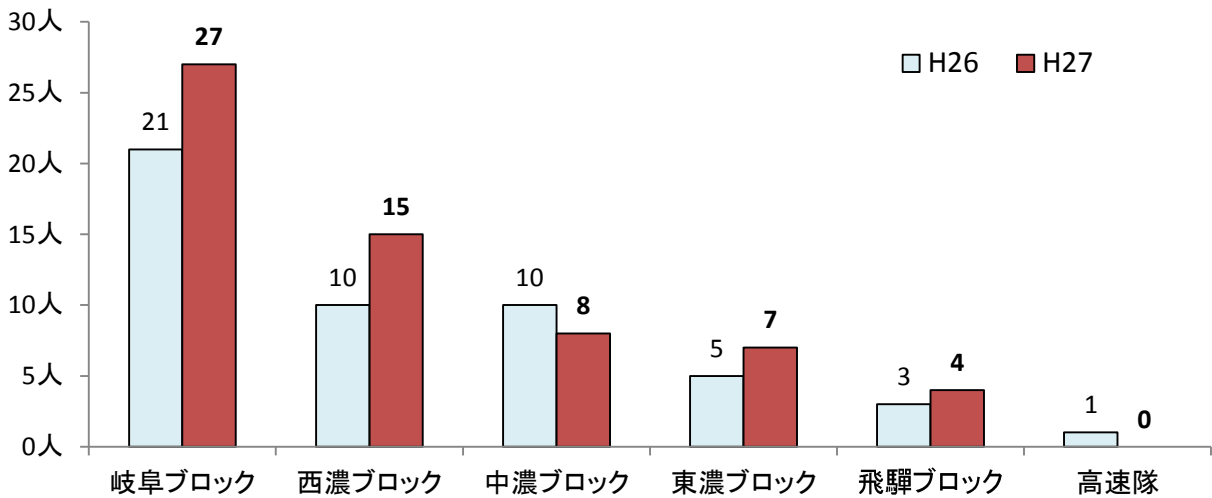
1 交通事故死者の年別推移(過去10年間)



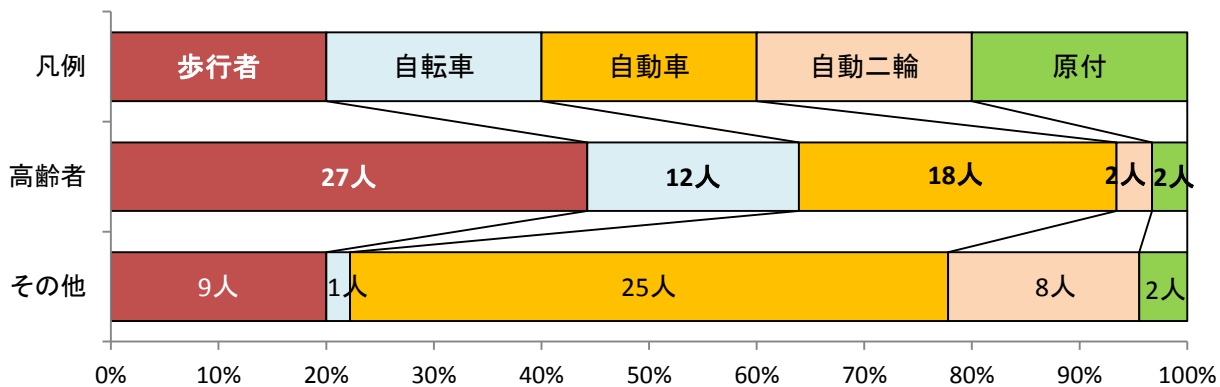
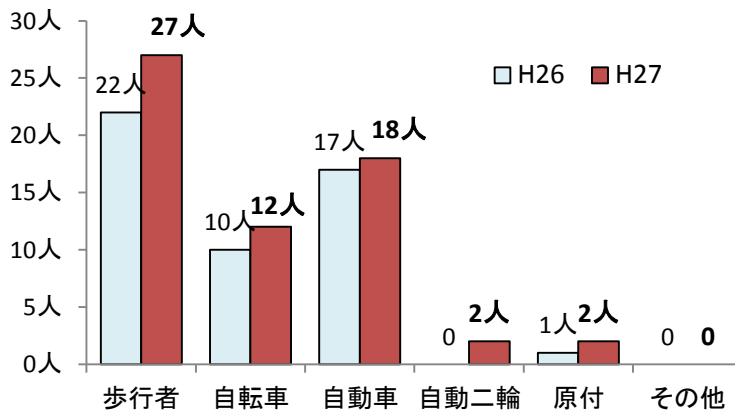
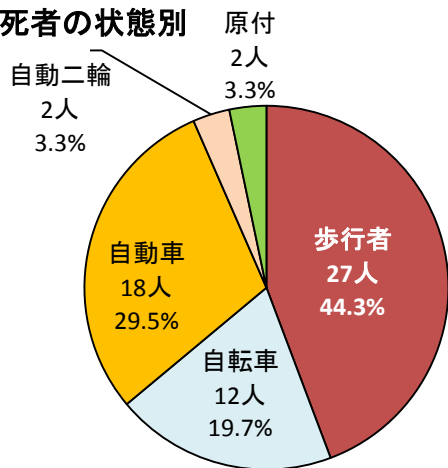
2 月別発生状況(死者数)



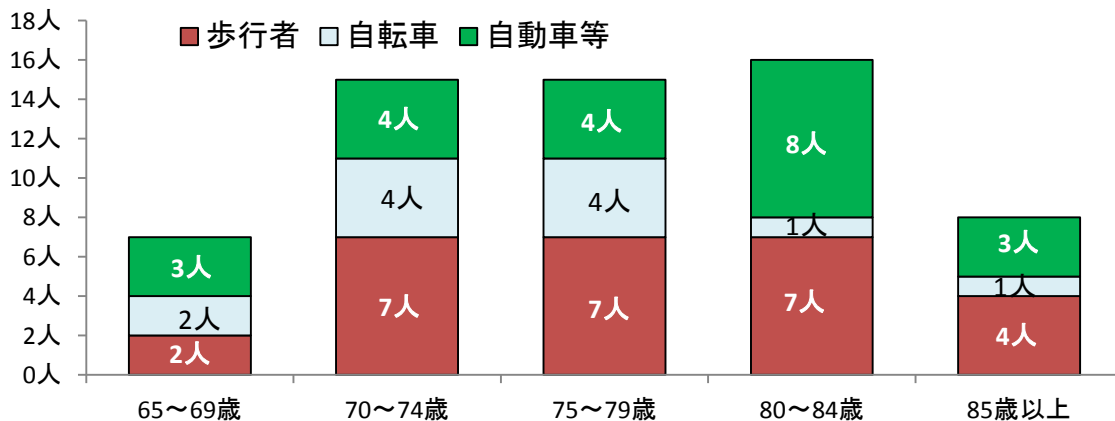
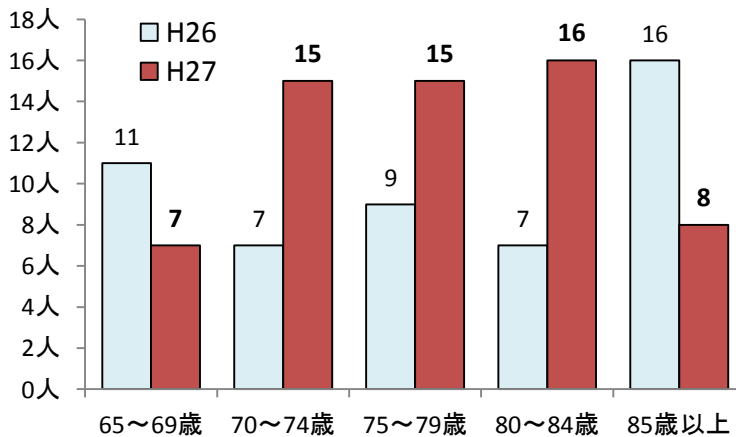
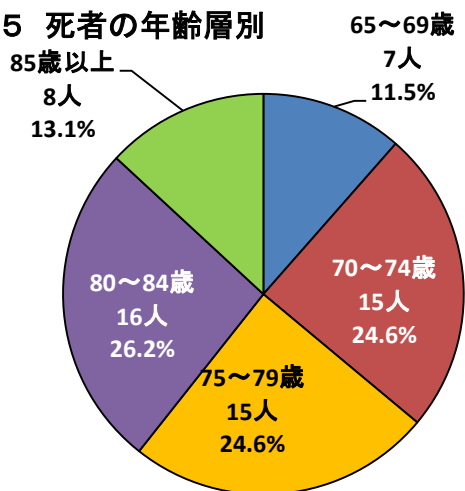
3 ブロック別発生状況(死者数)



4 死者の状態別

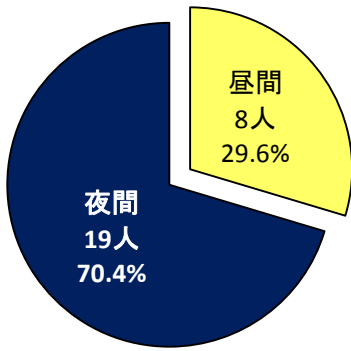


5 死者の年齢層別

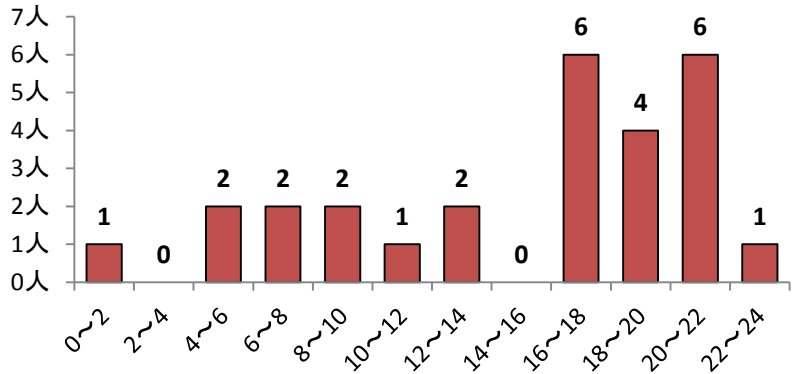


6 歩行者の死者

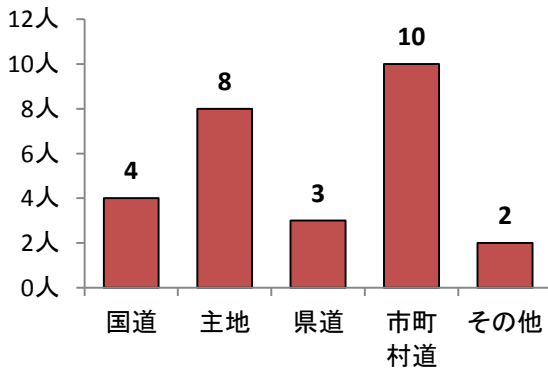
(1) 昼夜別



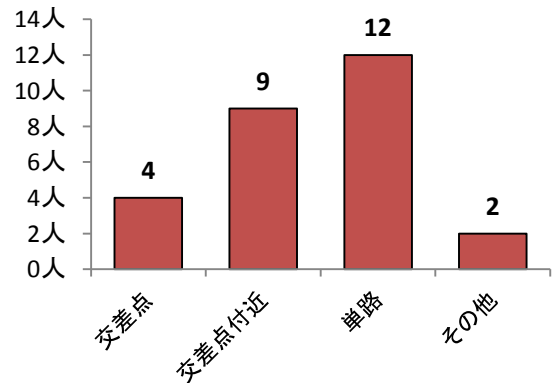
(2) 時間帯別



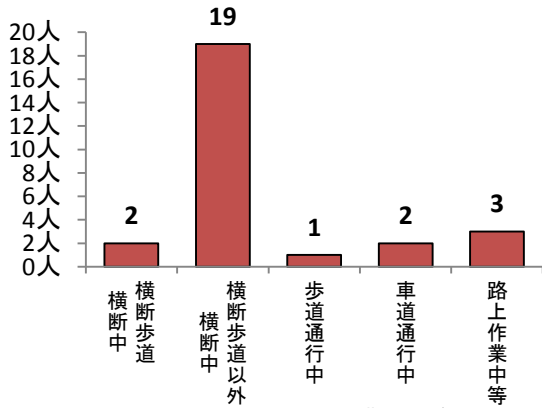
(3) 路線別



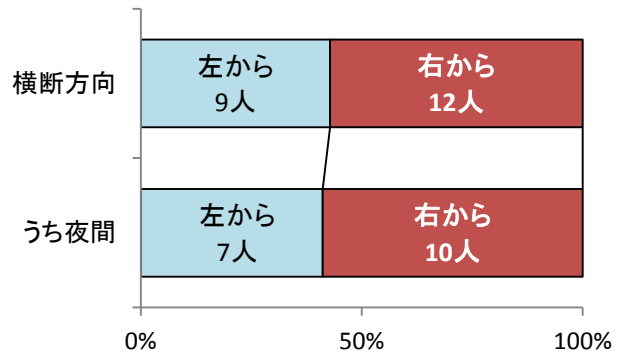
(4) 道路形状別



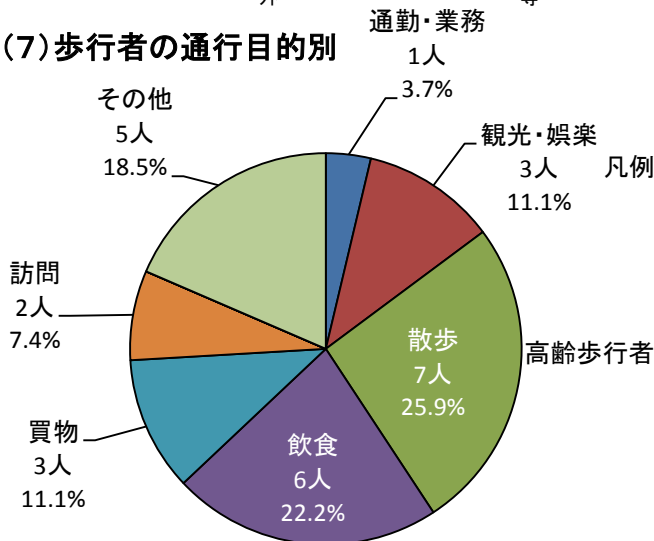
(5) 歩行者の行動類型別



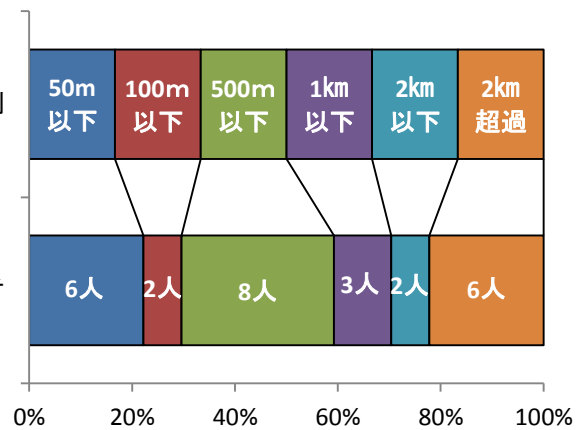
(6) 運転者から見た歩行者の横断方向別



(7) 歩行者の通行目的別

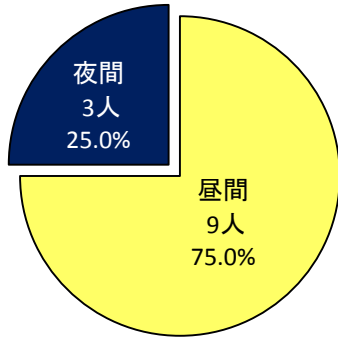


(8) 事故時の歩行者の自宅からの距離

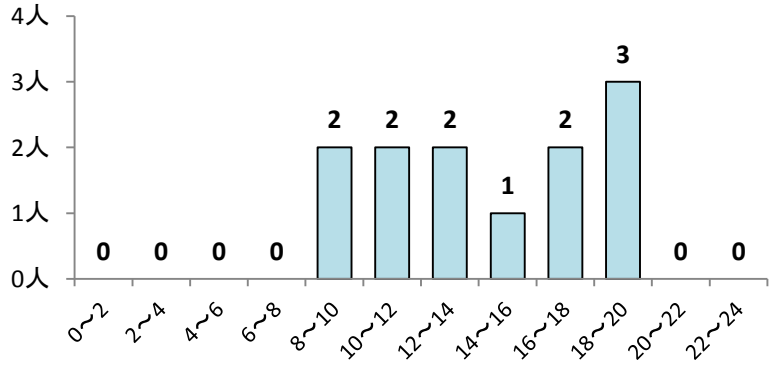


7 自転車の死者

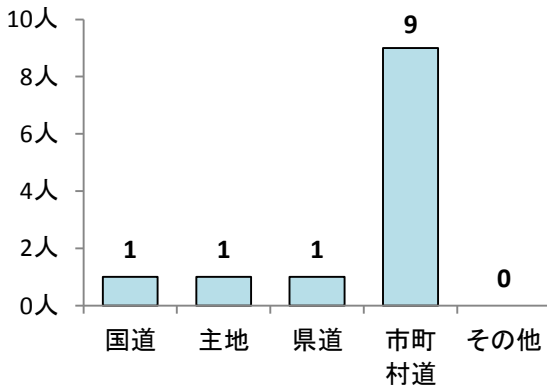
(1) 昼夜別



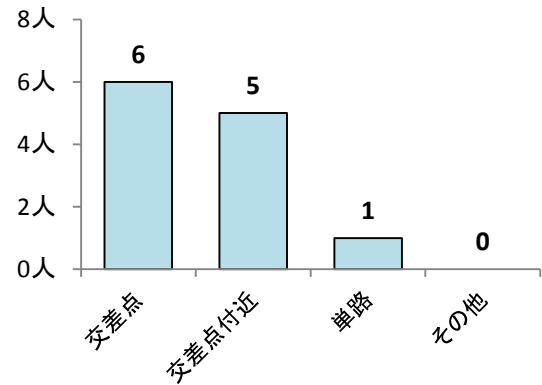
(2) 時間帯別



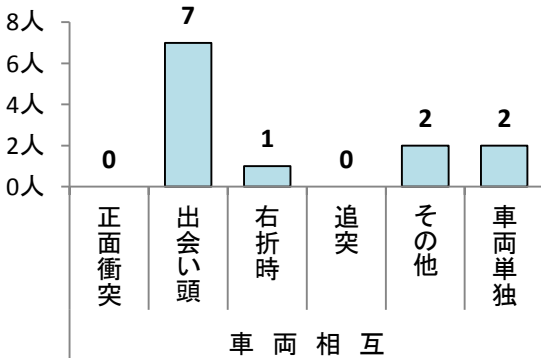
(3) 路線別



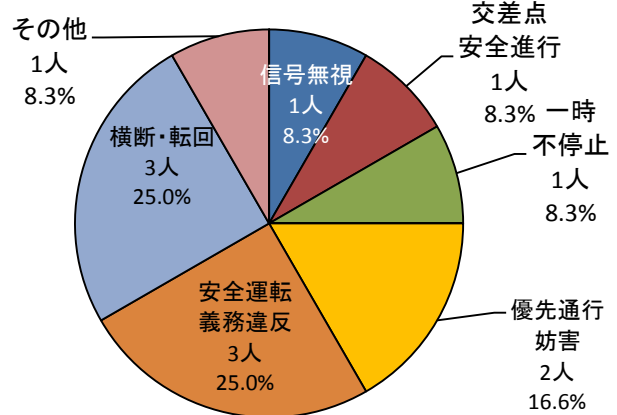
(4) 道路形状別



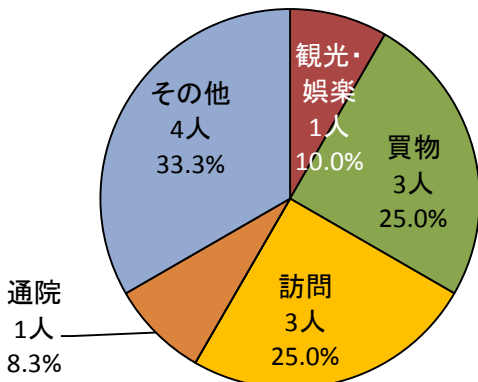
(5) 事故類型別



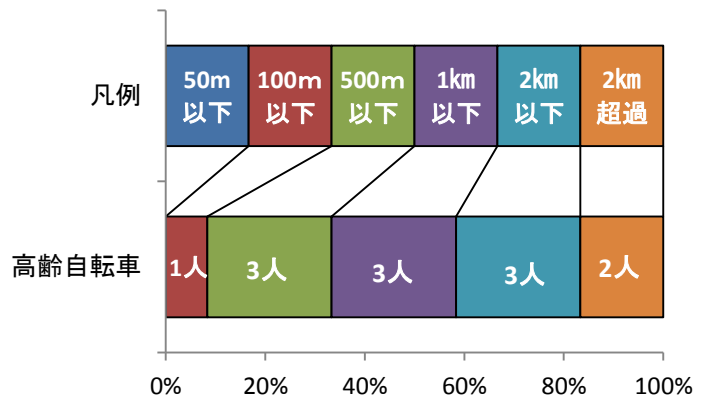
(6) 自転車の事故原因別



(7) 自転車の通行目的別

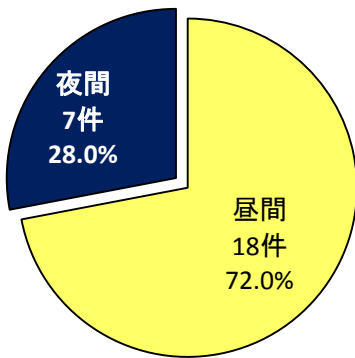


(8) 事故時の自転車の自宅からの距離

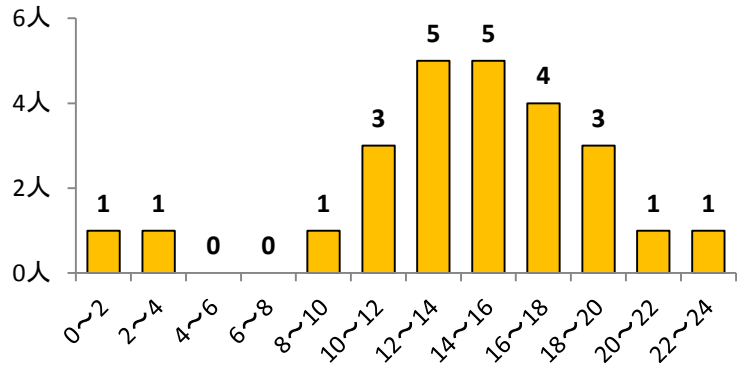


8 高齢運転者(主たる原因者)

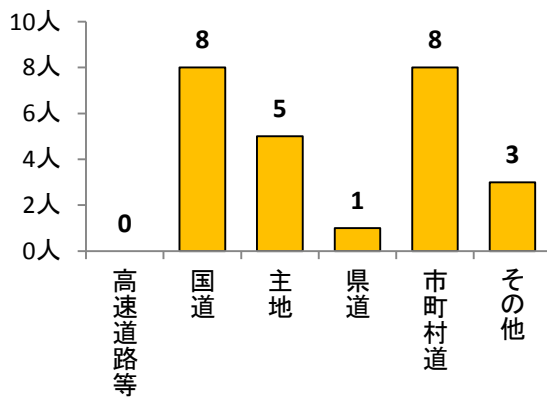
(1) 昼夜別



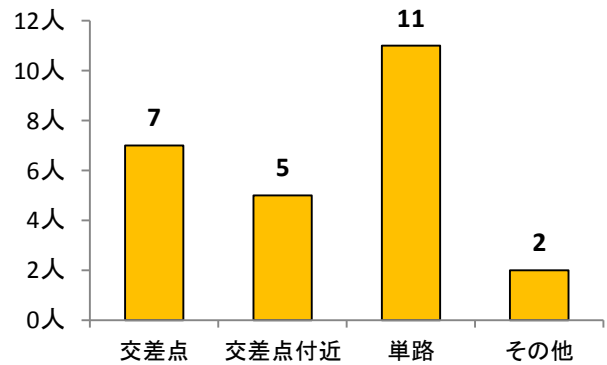
(2) 時間帯別



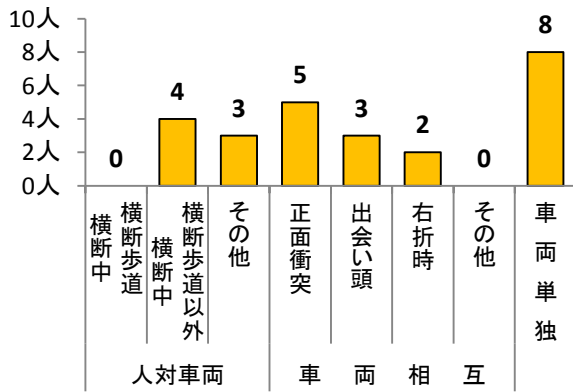
(3) 路線別



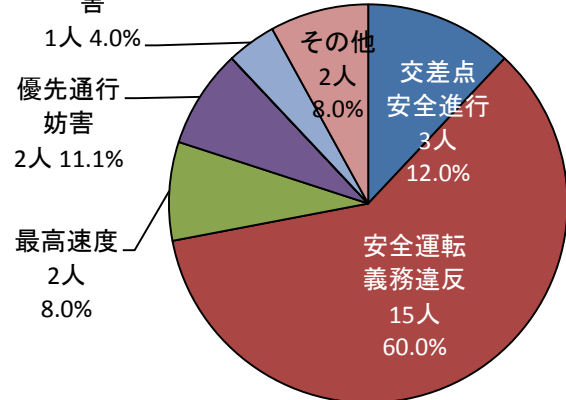
(4) 道路形状別



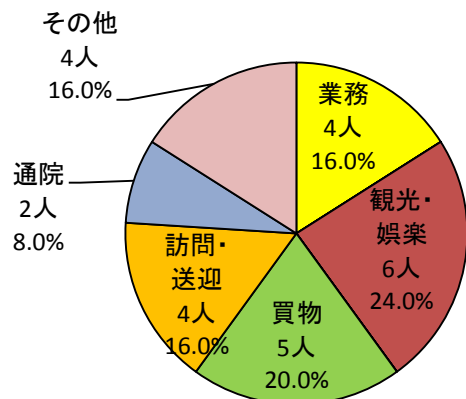
(5) 事故類型別



(6) 事故原因別



(7) 通行目的別



(8) 運転者の年齢層別・男女別

